

Priority access and preemption

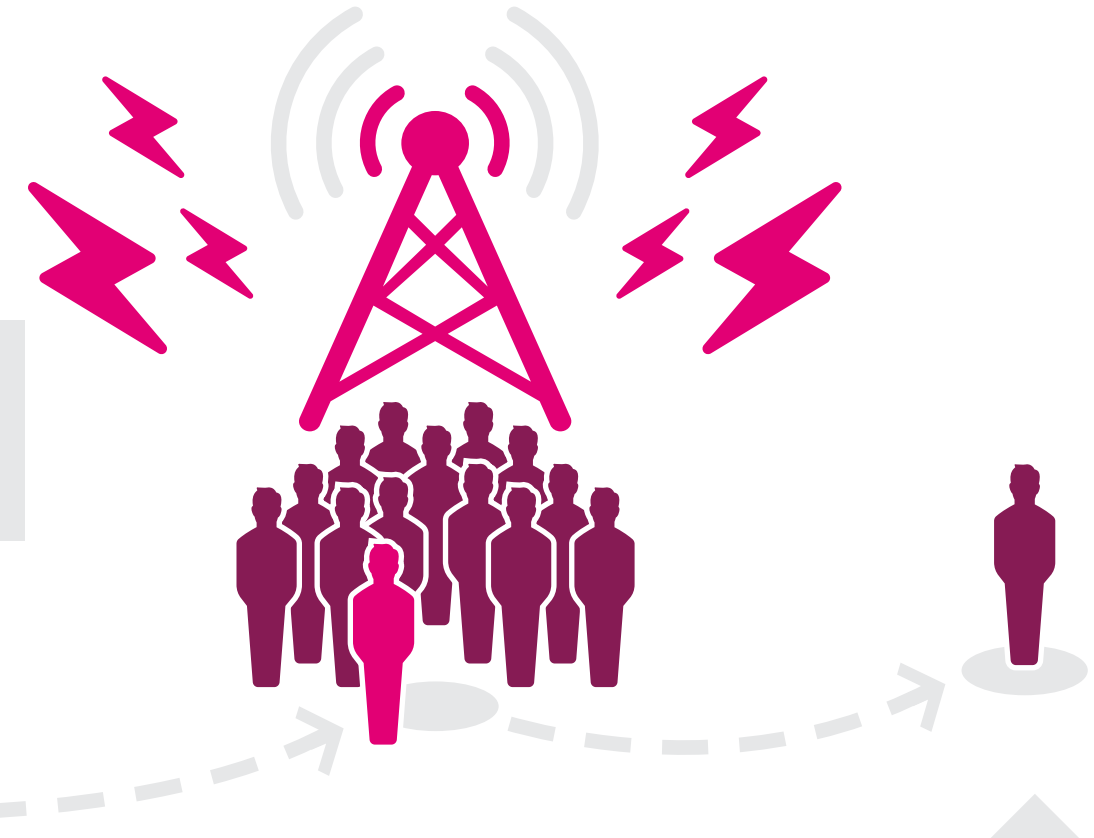
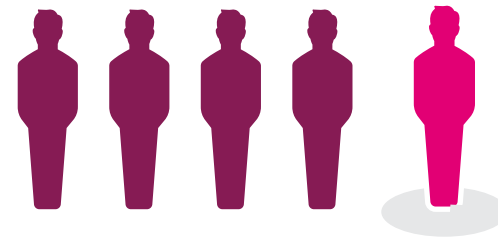
First responders deserve more

The T-Mobile® for Government Connecting Heroes® program provides WPS-enrolled first responder agencies with the **priority access** and **preemption** they may need during emergency situations.

How it works:

In an emergency, the network may become severely congested and 100% occupied. To ensure that first responders with WPS can access our network, we move them to the front of the line, and we drop a non-first responder customer without WPS off the network to make room for the first responder.

Priority access
First responder with WPS gets moved to the front of the communication line.



Preemption

A non-first responder without WPS is dropped off the network to make room for the first responder with WPS.