



DUAL CELLULAR / DUAL WI-FI  
4G/5G PLATFORM



Manage this device with  
Digi Remote Manager



# DIGI TX64

High performance cellular router with dual redundant communications for complex transit and transportation systems

Ideal for challenging transportation and mobile environments, Digi TX64 is a 5G and 4G LTE-Advanced Pro cellular router with true enterprise class routing, security, firewall and integrated VPN. It offers a flexible interface design with an integrated Wi-Fi access point, USB, serial and 4-port Ethernet switch, as well as a variety of configuration options including dead-reckoning GNSS and Bluetooth®.

Internet access for riders is managed securely and without impact to onboard bus systems. Technologies like 5G NR, EN DC and carrier aggregation deliver up to Gigabit speeds to passengers. Onboard systems retain priority and any remaining bandwidth is made available to Internet traffic.

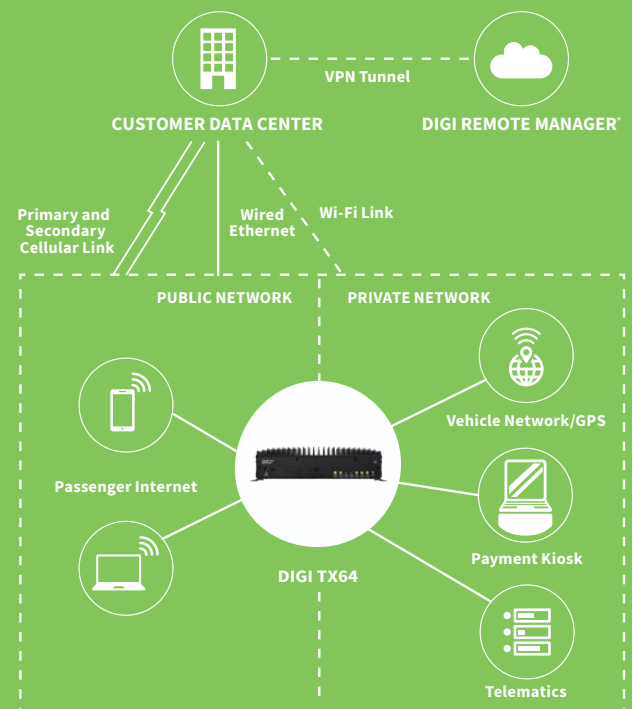
A captive portal and splash page enable term acceptance, targeted messaging and agency branding. Standard HTTP/DNS redirect can be used to block malware and unwanted content through popular third-party service providers or an agency server.

Reliable power circuitry supports 9-36 VDC input with ignition sense for direct integration into the vehicle's power source. Dual cellular and dual Wi-Fi modules provide true segmented traffic flow of private and public data for fare collection, CAD/AVL data, camera log backhaul and passenger Wi-Fi access.

## FEATURES AND BENEFITS

- 5G platform: future-built with powerful quad-core processor
- Segmented private and public data communication across 5G NR Sub-6 GHz and 4G LTE-Advanced Pro Cat 20 modems
- Wired Gigabit Ethernet (4-port) for onboard systems
- Video and vehicle data offload over Wi-Fi 5 4x4 backhaul
- Passenger Wi-Fi 5 over Wi-Fi 5 2x2 access point
- Digi Remote Manager® platform for easy setup, mass configuration and management

## APPLICATION EXAMPLE



## RELATED PRODUCTS



Digi TX54



Digi WR31



Digi WR44 RR



Accessories



Digi Remote Manager®

## SPECIFICATIONS

## DIGI® TX64

## WIRELESS INTERFACES

## WWAN\*

5G NR SUB-6 GHz  
WITH 4G LTE AND 3G FALLBACK

5G NR Sub-6 bands: n1, n2, n3, n5, n28, n41, n66, n71, n77, n78, n79

4G LTE-ADVANCED PRO  
WITH 3G FALLBACK

4G LTE Advanced Pro bands: B1, B2, B3, B4, B5, B7, B8, B12, B13, B14, B17, B18, B19, B20, B25, B26, B28, B29, B30, B32, B34, B38, B39, B40, B41, B42, B46, B48, B66, B71

3G bands: B1, B2, B3, B4, B5, B6, B8, B9, B19

## CONNECTOR

2 or 4 x 50 Ω SMA per module (center pin: female)

## SIM SLOTS

2 mini-SIM (2FF) per module (4 total)

## SIM SECURITY

SIM slot cover plate included

## WI-FI

## DUAL MODULES

Private backhaul: 4 x 4 MU-MIMO 5 GHz 802.11 a/n/ac Wave 2, up to 128 stations per module, 1.733 Gbps (max)  
Public Wi-Fi: 2 x 2 MIMO 2.4/5 GHz 802.11 a/b/g/n/ac, up to 128 stations per module, 867 Mbps (max)

## HOTSPOT

Captive portal, customizable splash page

## AUTHENTICATION

Basic ToS acceptance, Enterprise RADIUS

## 3RD PARTY SERVICES

Content filtering, embedded advertising

## MODES

Up to 4 access points and 1 client per Wi-Fi module (8+2 total)

## SECURITY

WPA/WPA2-Personal, WPA/WPA2-Enterprise

## CONNECTORS

Private backhaul: 4 x 50 Ω RP-SMA (center pin: male)  
Public Wi-Fi: 2 x 50 Ω RP-SMA (center pin: male)

## BLUETOOTH®

## MODULE

BLE 4.2

## GNSS

## TECHNOLOGY

Multi-constellation: concurrent reception (GPS, Galileo, GLONASS, BeiDou)

## SENSITIVITY

-163 dB

## PROTOCOL

NMEA 0183 V2.3 sentence output

## CONNECTOR

1 x 50 Ω SMA (center pin: female); +3.3 VDC active antenna drive

## HARDWARE

## SERIAL

## PORTS / CONNECTOR

1 RS-232; DB-9 male

## ETHERNET

## PORTS / CONNECTOR

4; RJ-45

## STANDARD

IEEE 802.3; 10/100/1000 Base-T

## USB

## PORTS

3

## STANDARD

USB 3.0, Type A

## MEMORY

## RAM

2 GB

## FLASH

8 GB (CFAST card)

## PHYSICAL

## DIMENSIONS

260 mm x 196 mm x 67 mm (10.2 in x 7.8 in x 2.6 in)

## WEIGHT

3.3 kg (7.25 lbs)

## STATUS LEDS

Power, WWAN (signal, service) per module, Wi-Fi service (per module), GNSS service, LAN (link, activity)

## ENCLOSURE

IP40 aluminum alloy

## POWER

## POWER INPUT

9 - 36 VDC, 60 W minimum power source required

## POWER CONSUMPTION

28 W typical (idle); 41 W (peak RF Tx/Rx)

## ENVIRONMENTAL

## MOUNTING

Flexible mounting options

## OPERATING TEMPERATURE

-30° C to 70° C (-22° F to 158° F)

## STORAGE TEMPERATURE

-40° C to 85° C (-40° F to 185° F)

## RELATIVE HUMIDITY

0% to 95% (non-condensing) @ 25° C (77° F)

## SPECIFICATIONS

## DIGI® TX64

NEMA	
SPECIFICATION	Meets or exceeds the NEMA TS2 environmental requirements (-34° C to 74° C temperature range; 18% to 95% humidity over the temperature range; Vibration: 0.5 g @ 5 Hz to 30 Hz; Shock: 10 g)
APPROVALS	
CELLULAR	Pending:PTCRB, AT&T, T-Mobile,Verizon, PNTM
WARRANTY	
PRODUCT WARRANTY	3-year*

\*Standard 3-year warranty upgradeable to 5 years with purchase of a Digi Remote Manager Premier 5-year subscription applicable to the product purchased only at the time of product purchase and with product registration at that time in Digi Remote Manager.

## ENTERPRISE SOFTWARE

## DESCRIPTION

PROTOCOL SUPPORT	HTTP, HTTPS, FTP client, SSL, TLS v1.2, SCP (client and server), SFTP, SMTP client for use by scripts and the command line, SNMP (v2/v3), SSH; remote management via Digi Remote Manager®; serial Modbus, MQTT client, protocol analyzer, ability to capture PCAP for use with Wireshark; DynDNS; dynamic DNS client compatible with BIND9/No-IP/DynDNS; DMNR; Dual-APN captive portal, Intelliflow; X.509 certificate management; dead reckoning
SECURITY	IP filtering, stateful firewall, custom firewall rules (iptables), address and port translation; SSL, SSLv2, SSLv3; Authentication: RADIUS, TACACS+; certificates; MAC address filtering; VLAN support
VPN	IPSec with IKEv1, IKEv2, NAT Traversal; OpenVPN client and server; GRE VPN tunnels; Cryptology: SHA-1/256/384/512, MD5, RSA; Encryption: 3DES and AES up to 256-bit (CBC mode for IPsec); Diffie Hellman: DH groups 1-32 (CURVE448)
ROUTING/FAILOVER	IP pass-through; NAT, NAPT with IP port forwarding; Ethernet bridging; Ethernet bonding; GRE; multicast routing; Routing protocols: RIP (v1, v2) OSPF, BGP; IP failover: VRRP, VRRP+; automatic failover, Digi SureLink®
OTHER PROTOCOLS	DHCP; Dynamic DNS client compatible with No-IP/DynDNS; Nagios, DNS server, NTP server, Multicast, mDNS, IPerf
LOCAL MANAGEMENT	Web interface (HTTP/HTTPS); CLI (SSH, serial port); custom factory configuration
MANAGEMENT / TROUBLESHOOTING PROTOCOLS	Protocol analyzer with PCAP for Wireshark, event and system logging (with syslog), accessible from Digi Remote Manager, SFTP or SCP
PROGRAMMING TOOLS / ENVIRONMENTS	Python v3.6.4

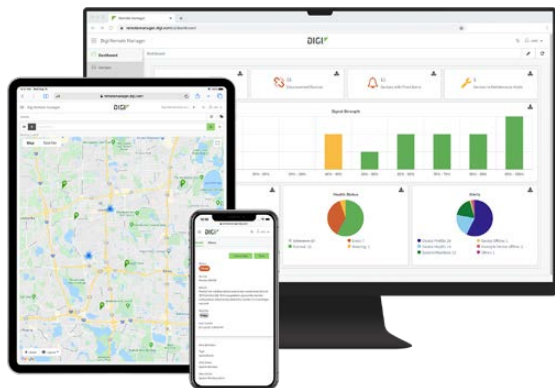
## PRODUCT IMAGES

### FRONT



### BACK





Digi Remote Manager is the technology platform that brings networks to the next level, allowing networks — and the people who manage them — to work smarter. With Digi Remote Manager you can transform a multitude of dispersed IoT devices into a dynamic, intelligent network. Now you can easily deploy, monitor and diagnose thousands of mission-critical devices from a single point of command — on your desktop, tablet or phone. All the while, its software-defined security diligently safeguards your entire Digi ecosystem.

Learn more at [www.digi.com/digi-remote-manager](http://www.digi.com/digi-remote-manager)

## CAPABILITIES

- Activate, monitor and diagnose your mission-critical devices from a single point of command and control — on your desktop or mobile app
- Schedule key operations — including firmware updates and file management — on a single device or on a group of devices, keeping your network functionality up-to-date and maintaining compliance standards
- Manage edge devices out-of-band via console terminal access
- Keep tabs on device health and connectivity across device deployments of any size
- Create detailed reports and enable real-time alerts for specified conditions
- Integrate device data through open APIs to gain deeper insights and control with third-party applications
- Report and alert on performance statistics, including connection history, signal quality, latency, data usage and packet loss

## INFRASTRUCTURE

- Hosted in a commercial-grade cloud server environment that meets SOC 1®, SOC 2® and SOC 3® standards
- Superior availability, operating to 99.9% or greater
- Open APIs available to support application development

## SECURITY

- More than 175 security controls in place to protect your data
- Member of the Center for Internet Security® (CIS®)
- Enables compliance with security frameworks like ISO27002, HIPAA, NIST and more
- Earned Skyhigh's CloudTrust™ Program highest rating of Enterprise-Ready

PART NUMBERS	DIGI REMOTE MANAGER®
DIGI-RM-STD-1YR	Digi Remote Manager Standard - 1-year subscription
DIGI-RM-PRM-1YR	Digi Remote Manager Premier - 1-year subscription
DIGI-RM-PRM-3YR	Digi Remote Manager Premier - 3-year subscription
DIGI-RM-PRM-5YR	Digi Remote Manager Premier - 5-year subscription

PART NUMBERS	DIGI® TX64
TX64-A161	Digi TX64 - 5G NR Sub-6, 4G LTE Advanced Pro,,dual-Wi-Fi, dead-reckoning GNSS, global

PART NUMBERS	ACCESSORIES*
76002076	Digi TX64 power supply
TBD	Digi TX64-A161 accessory kit (power supply plus antennas

\*Sold separately, unless otherwise noted.

FOR MORE INFORMATION  
PLEASE VISIT **DIGI.COM**

**DIGI SERVICE AND SUPPORT** / You can purchase with confidence knowing that Digi is always available to serve you with expert technical support and our industry leading warranty. For detailed information visit [www.digi.com/support](http://www.digi.com/support).

© 1996-2021 Digi International Inc. All rights reserved. All trademarks are the property of their respective owners.

**DIGI INTERNATIONAL WORLDWIDE HQ**  
877-912-3444 / 952-912-3444 / [www.digi.com](http://www.digi.com)

**DIGI INTERNATIONAL GERMANY**  
+49-89-540-428-0

**DIGI INTERNATIONAL JAPAN**  
+81-3-5428-0261 / [www.digi-intl.co.jp](http://www.digi-intl.co.jp)

**DIGI INTERNATIONAL SINGAPORE**  
+65-6213-5380

**DIGI INTERNATIONAL CHINA**  
+86-21-50492199 / [www.digi.com.cn](http://www.digi.com.cn)

