



## BLR EDGE 800W

The router that redefines reliable wireless connectivity

### Empowering Your Business with Next-Gen Wireless Reliability

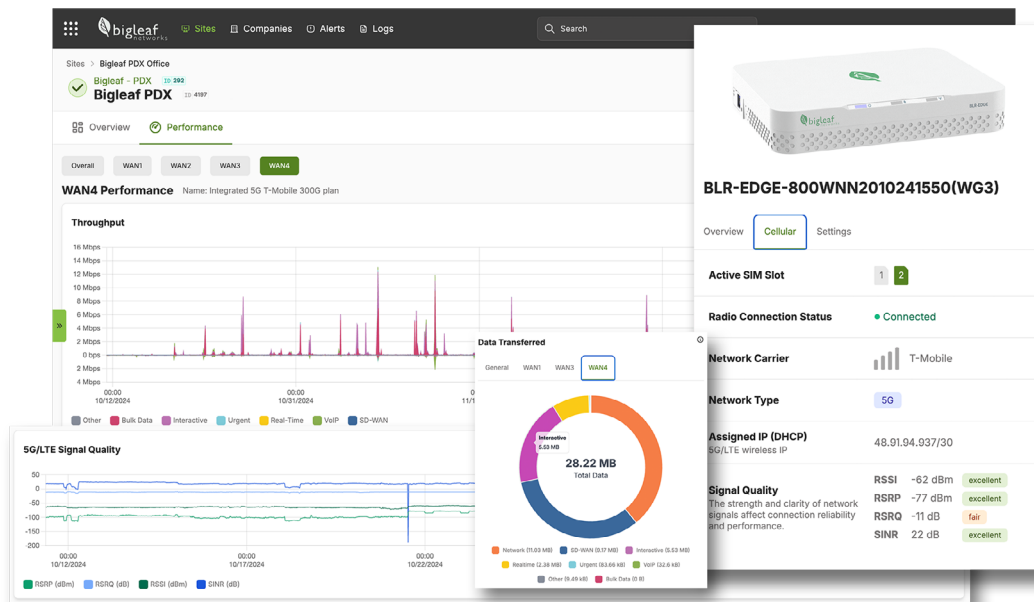
The BLR Edge 800W is purpose-built for businesses that rely on wireless connectivity to power critical technologies and maintain seamless operations. As the gateway to Bigleaf Cloud Connect, this router delivers enterprise-grade performance, even in the most demanding environments. Whether supporting underserved rural or remote locations, temporary setups, or fast-evolving business needs, the BLR Edge 800W ensures your network is always ready to meet the challenge.

### Intelligent 5G Integration for Uninterrupted Business Operations

Powered by integrated 5G technology, Bigleaf Cloud Connect with the BLR Edge 800W maximizes the performance of every connection by prioritizing critical applications, intelligently managing failover across a unified network of wired and wireless lines, and delivering unmatched reliability. Paired with Bigleaf Wireless Connect plans, this solution provides an always-on connection that offers the flexibility to adapt, the scalability to grow, and the cost-efficiency to keep your business moving forward—wherever and however you operate.

### Meet the BLR Edge 800W

- Plug and play install
- Arrives pre-configured with your circuit details and tested for a seamless, zero-configuration installation experience
- Installs outside firewall and works with any existing network infrastructure
- Aggregates, optimizes, and fails over traffic across up to 4 broadband circuits for optimal cloud performance
- Built-in modem with support for 5G NSA/SA and 4G LTE across North America
- Dual SIM capability with support for Bigleaf Wireless Connect plus 3 additional connections
- Remote management and monitoring through Bigleaf Cloud Connect dashboard
- Connects your sites to the Bigleaf backbone Cloud Access Network with Bigleaf-issued IP blocks
- LED status indicators for rapid diagnostic checks



## Visibility and Control Through the Bigleaf Cloud Connect Dashboard

Bigleaf Cloud Connect dashboard enables proactive network management with device information, real-time monitoring, and troubleshooting of all circuits connected to the BLR Edge router:

- **Device Details:** Access comprehensive information and settings for routers across sites in a centralized view.
- **Device Remote Reboot:** Initiate remote router restarts to resolve connectivity issues without requiring on-site support.
- **Traffic Performance:** Analyze traffic performance across all circuits.
- **Radio Connection Status:** Track 5G and LTE connection status and performance metrics in real-time.
- **Signal Quality and Health:** Monitor cellular signal strength to optimize router placement and connectivity.
- **Data Usage:** View current and historical wireless data usage for budget planning.

## BLR Edge 800W Specifications

GENERAL	
Throughput	500 Mbps / 500 Mbps
MTU	1420 bytes
ISP WAN Ports	3 x 2.5 GbE RJ45
LAN Ports to Firewall	1 x 2.5 GbE RJ45
Cellular WAN	5G / 4G LTE
Multi-use Fiber Ports	2 x 10G SFP+, 1 x 1G SPF RJ45
CPU Platform	Intel® Atom® C3758 CPU

PHYSICAL	
Mounting Options	1U (rack and wall options)
Dimensions (WxDxH)	10.0 x 7.9 x 1.7 inches
Power Draw	60W
Operating Environment	0 - 40° C temperature
Compliance	FCC, CE, UL, RoHS, IC
MTBF (Hours)	164,042 @ 40C

## Optimize Your Network Performance with Bigleaf!

[REQUEST A DEMO](#)



Bigleaf enables internet connectivity without complexity, from network optimization to 5G wireless solutions, making it a must-have for IT pros and their organizations to conduct business on the internet with confidence. Seamlessly integrating with established firewalls, ISPs, and cloud applications, Bigleaf's solutions are incredibly simple to install, begin working instantaneously, and continue to work unattended, preserving application performance and user productivity despite circuit degradation or outages.

[www.bigleaf.net](http://www.bigleaf.net) | 888.244.3133 | [sales@bigleaf.net](mailto:sales@bigleaf.net) | Copyright © 2025 Bigleaf Networks, Inc.